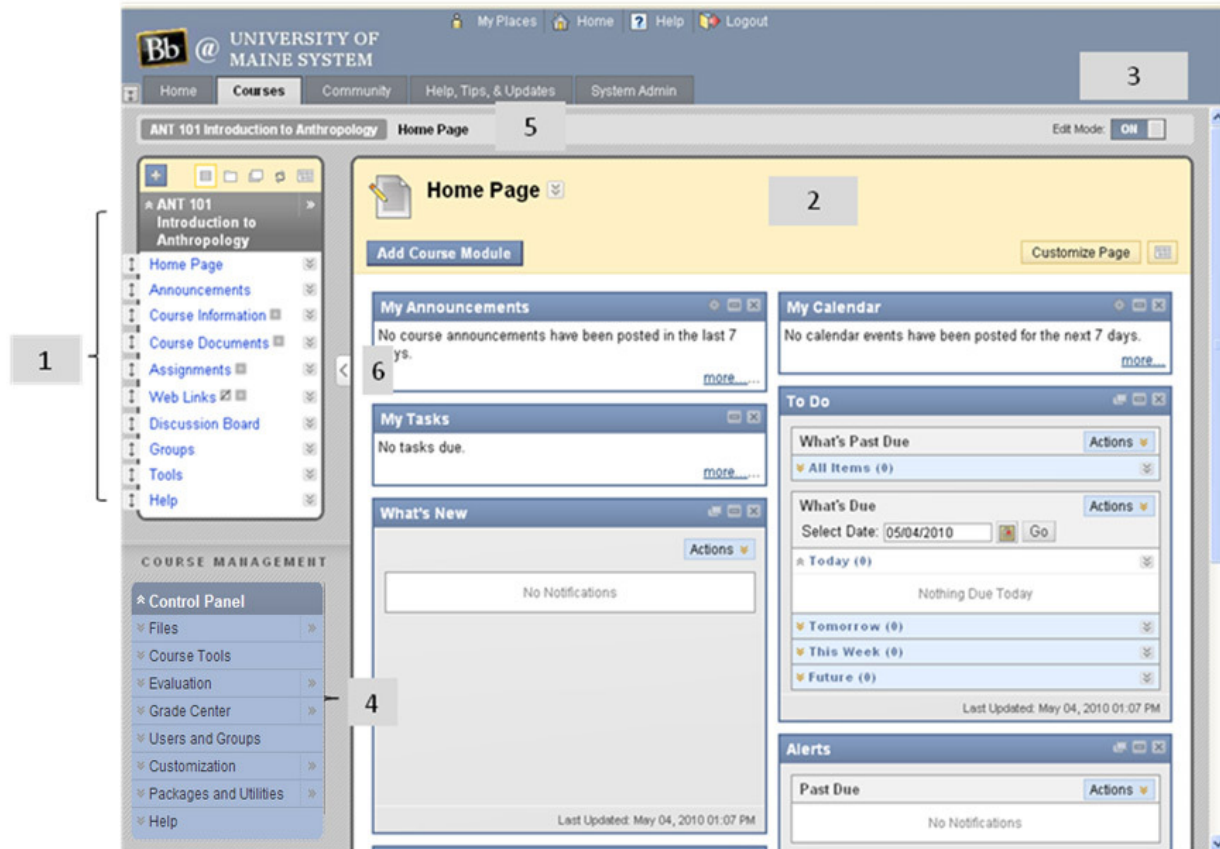


Navigating the course home page

The course home page is where you and your students will start when you log into the course.



Here you'll see:

1. **The course menu** – used to navigate to the different sections of the site. The menu can be customized. Note that the course menu can be expanded or hidden from view by clicking on the up arrows to the left of the course name.
2. **Home Page module**, including, by default: My Announcements, My Calendar, Tasks, What's New, To Do, Alerts, and Needs Attention. Many of these options link to tools that you may or may not decide to use.
3. **Edit Mode toggle (ON/OFF)** used to activate the tools and other options that you will use to create your site.
4. **Control Panel** – where you'll go to access many of the tools used to set up and manage your course site. *Students do not see the Control Panel button.*
5. **Breadcrumb area** – a series of links that display your path through the site so you can navigate easily.
6. **Toggle button to hide the menu area and maximize screen space for content** – click < to show a view of the course without the course menu buttons (freeing up more screen space for content). Click > to show default view with menus.